



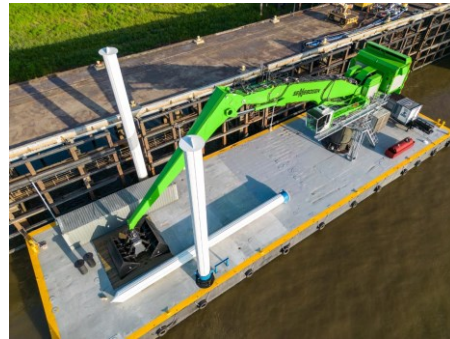
NEW FLOATING BARGE CRANE TO BOOST GRAIN OPERATIONS



Louis Dreyfus Company will use the Port's custom-made barge crane to unload additional grain barges, benefitting Louisiana farmers.

THE PORT OF GREATER BATON

ROUGE recently welcomed a specially designed pedestal crane mounted on a barge, which will be utilized by Louis Dreyfus Company's grain elevator during periods of high and low water to help unload grain barges shipped via the Mississippi River.



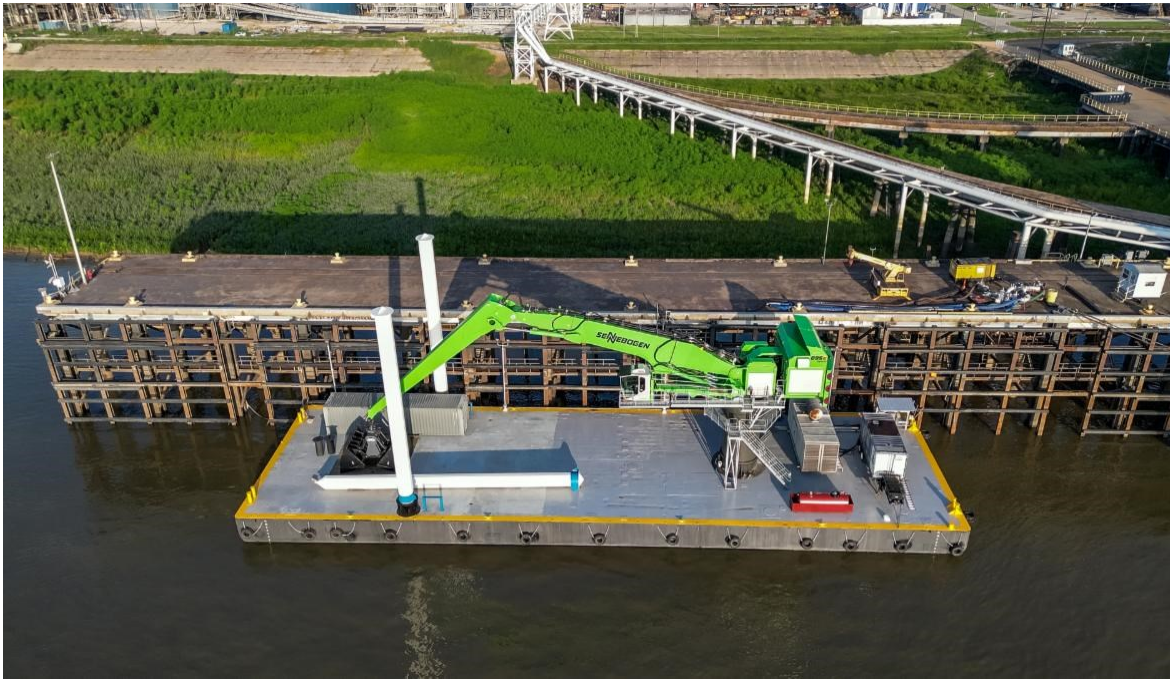
ACCORDING TO PORT EXECUTIVE DIRECTOR JAY HARDMAN,

the floating crane will help address the problem of fluctuating water levels on the Mississippi and could be a boon for farmers in the Port region and in other areas of Louisiana. "It has the capability of unloading barges directly into the grain elevator or taking the place of it in times of high water," explains Hardman. "It's an opportunity to get around those problems and create additional capacity and through-put for the grain elevator, plus possibly handling some commodities that wouldn't typically be handled there."

THE CRANE IS ELECTRICALLY POWERED and can move 25 cubic yards of grain with each scoop of its clam-shell bucket. Total cost of the "mid-stream loader" is approximately \$7 million, with 100 percent of those dollars coming from Louisiana's capital outlay program. Following on-site training over the upcoming weeks, Louis Dreyfus Company expects the crane to begin operations in October.

For more information, contact Greg Johnson: 225-342-1660.





Suzie Shilling | (225) 342-1660 | 2425 Ernest Wilson Drive, Port Allen, LA 70767